

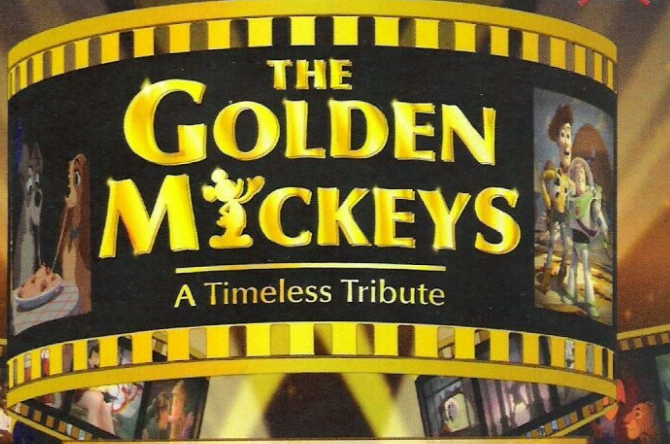
# PERSONAL NAVIGATOR

SUNDAY, SEPTEMBER 30 2012

Sunrise: 7:17 a.m. Sunset: 7:08 p.m.  
Evening Attire: Cruise Casual  
All Aboard: 3:45 p.m.

Sunday: Partly Sunny High: 82°F/28°C  
Monday: Partly Sunny High: 82°F/28°C


PORT CANAVERAL

**THE GOLDEN MICKEYS**  
A Timeless Tribute

WALT DISNEY THEATRE  
DECKS 3 & 4, FORWARD

6:15 P.M. & 8:30 P.M.

 Assistance available at the entrance to the Walt Disney Theatre 30 minutes prior to show time.

## Welcome Aboard!

**Your Stateroom & Luggage**  
Staterooms will be ready at 1:30 p.m. Stateroom hosts will deliver luggage throughout the day until 5:30 p.m.

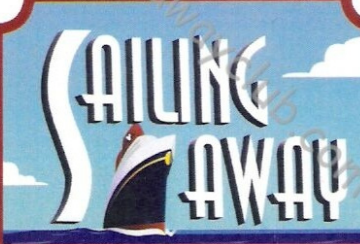
**Staterooms with Bunk Beds**  
Bunk beds are recessed into the ceiling and will be prepared during evening turndown service by your Stateroom Host/ess.

**Stateroom Safe**  
Each stateroom is equipped with a secured storage safe. Instructions for use are located on the safe.

**To Change Dining Assignment**  
Requests for a different seating will be taken today:  
• 1:00 - 3:30 p.m.; Book at Royal Palace  
• 3:30 - 4:30 p.m.; Please call 7-1831, 7-1832, or 7-1833

**Remy & Palo Bookings for Brunch & Dinner**  
Bookings will be taken on a first come basis today at:  
• 1:00 - 3:30 p.m., Palo; Book at Royal Palace  
• 1:00 - 3:30 p.m., Remy; Book at Royal Palace  
Reservations required & cover charge applicable. Please dial 7-9734, or 7-9735 for more information.

**Dinner**  
• 5:45 p.m. - First seating  
• 8:15 p.m. - Second seating  
Please check your dining tickets for details of your dining rotation, and bring them to your specific dining location. There is no need to wait in line prior to dinner. Dining Rooms open at designated seating times & your table is reserved each night of your cruise.



**It's time to go Sailing Away!**  
Join Mickey and Minnie, along with Tinker Bell and the rest of the gang, as they welcome you aboard the Disney Dream.

4:30 p.m.  
Deck Stage,  
Deck 11, Midship

## Don't Miss:

**Welcome Aboard Ship Tour**  
*Meet at Preludes, Deck 3, Forward - 1:00 & 2:00 p.m.*  
Enjoy the beauty of the Disney Dream with your Cruise Staff in this guided tour.

**Mirror, Mirror Game Show**  
*D Lounge, Deck 4, Midship - 10:15 p.m.*  
Join the Magic Mirror and Dopey in the fairest game show of them all, Mirror, Mirror. There's trivia, singing and even a relay race. Hi Ho, Hi Ho, its off to play we go!

**Adult Cabaret: Max Winfrey**  
*Evolution (18+), Deck 4, Aft - 10:30 p.m.*  
Featuring the Physical Comedy of Max Winfrey, as he entertains you in this adult cabaret-style show.

**Saludos Amigos Fiesta**  
*D Lounge, Deck 4, Midship - 10:45 p.m.*  
Hola Amigos! Consider this your exclusive invitation to a Latin dance party, that has all the trimmings of a proper fiesta. Learn to Salsa, Merengue and have a Latin good time, just don't tell Donald about the party - it's a surprise!



**GET THE PICTURE!**  
Visit Shutters today and ask your friendly Shutters staff about the GET THE PICTURE! unlimited digital package which includes all your stateroom photos on one photo disc. For best value, upgrade to include all printed photos, too! Visit Shutters on Deck 4 Midship for more information. Don't wait until the last day. Beat the rush and order yours now! Terms and conditions apply.

**DINNER MENU**  
Animator's Palate: Pacific Rim Cuisine  
Enchanted Garden: Continental Market  
Royal Palace: French Dinner

**DRINK OF THE DAY**  
Yellow Bird (Alcoholic)  
Parrot Song (Non Alcoholic)

**IMPORTANT NUMBERS**  
Fire/Security: 7-3001  
Medical Emergency: 7-3000  
Health Center: 7-1923



# FAMILY ACTIVITY HIGHLIGHTS

## FAMILY SUPERSTAR KARAOKE

*D Lounge, Deck 4, Midship - 9:15 p.m.*

Join your Cruise Staff in D Lounge tonight and sing along to your favorite song - fun for everyone.

## SALUDOS AMIGOS FIESTA

*D Lounge, Deck 4, Midship - 10:45 p.m.*

Hola Amigos! Consider this your exclusive invitation to a Latin dance party, that has all the trimmings of a proper fiesta. Learn to Salsa, Merengue and have a Latin good time, just don't tell Donald about the party - it's a surprise!

## Cruise Highlights

<b>Sunday</b>	<b>PORT CANAVERAL</b> <i>All Aboard: 3:45 p.m.</i> <i>Attire: Cruise Casual</i>	<b>THE GOLDEN MICKEYS</b> <i>Walt Disney Theatre</i> 6:15 & 8:30 p.m.
<b>Monday</b>	<b>NASSAU</b> <i>All Ashore: 9:30 a.m.</i> <i>All Aboard: 1:45 a.m.</i> <i>Attire: Optional Dress Up</i>	<b>VILLAINS TONIGHT!</b> <i>Walt Disney Theatre</i> 6:15 & 8:30 p.m.
<b>Tuesday</b>	<b>CASTAWAY CAY</b> <i>All Ashore: 8:30 a.m.</i> <i>All Aboard: 5:00 p.m.</i> <i>Attire: Pirate/Cruise Casual</i>	<b>CABARET: MAX WINFREY</b> <i>Walt Disney Theatre</i> 6:15 & 8:30 p.m.
<b>Wednesday</b>	<b>DAY AT SEA</b> <i>Attire: Cruise Casual</i>	<b>DISNEY'S BELIEVE</b> <i>Walt Disney Theatre</i> 6:15 & 8:30 p.m.

Subject to change.



# ADULT ACTIVITY HIGHLIGHTS

## FITNESS CLASSES



*Senses Spa and Salon has a variety of seminars and fitness classes available throughout the cruise.*

*Spa Tours - Senses Spa & Salon, 12:00 p.m. - 4:00 p.m.*

*Spa Raffle - Senses Spa & Salon, 3:00 p.m.*

## BEVERAGE SEMINARS

*Your Beverage team has a host of tastings and seminars to entertain and educate you. Stop by District Lounge, Deck 4, Aft between 12:00 p.m. and 3:30 p.m. to pre-book these experiences. Nominal fees apply.*

*Whiskey Tasting - Meridian - 9:30 p.m.*

## LIVE MUSIC WITH "TRILOGY"

*District Lounge, Deck 4, Aft - 7:30, 9:30, 10:15 & 11:00 p.m.*

Join Trilogy as they play live in District Lounge for your listening pleasure.

**CLUB  
18\*21**

## CLUB 18\*21 ICE BREAKERS

*Evolution, Deck 4, Aft - 10:00 p.m.*

Club 18\*21 is an exclusive gathering for young adult Guests. Come meet fellow cruisers and learn about the great activities the Disney Dream has to offer to help create the perfect cruise experience.



## ROADHOUSE FOLLOWED BY EVOLUTION NIGHTCLUB WITH GUEST DJ CHRISTIAN GAMA

*Evolution, Deck 4, Aft - 11:00 p.m.*

Join your Club Host, Franky, and the Cruise Staff team, as they round up the greatest classic rock and urban country hits. With a special appearance by the Evolution Dancers.

## FEATURED CABARET ACT THIS VOYAGE



### THE PHYSICAL COMEDY OF MAX WINFREY

Max was definitely a goof off in High School. After graduation, he decided to turn pro. He embarked on a journey that has left a trail of laughs and gasps from the streets of Walt Disney World all the way to TV land. On the way he has become one of the highest rated Headline Comedians in the Corporate and Cruise Entertainment Industries.

## SENSES SPA BINGO

**D Lounge, Deck 4, Midship**

**Card Sales - 7:30 p.m.**

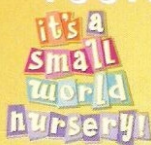
**Game Starts - 7:45 p.m.**

Four cash prizes up for grabs, plus great spa prizes to be won, including facials and massages courtesy of the Senses Spa & Salon. Complete the Big X in 20 numbers or less, and \$500 could be yours. If not we continue to play for the highest cash prize of the session!





# YOUTH ACTIVITIES HIGHLIGHTS



**Deck 5 Midship (7-5864) 5:30 p.m. - 12:00 Mid**  
 Infants and Toddlers can enjoy toys and activities at It's A Small World Nursery. Reservations are first come, first served so please stop by!



**Deck 5, Midship (7-1440)**  
**6:45 p.m. - 12:00 mid**



**Deck 5, Midship (7-1445)**  
**5:30 p.m. - 1:00 a.m.**

## REGISTRATION FOR 3-12 YEAR OLDS

Meet the Youth Activities Team in the Oceaneer Lab and Oceaneer Club, complete your registration & learn all about the Themed Experiences this cruise!

**CLUBHOUSE SERIES** - The Clubhouse Themed Experiences focus on movement and feature content which appeals to younger children. *Recommended 7 yrs & younger.*

**STORYBOOK SERIES** - The Storybook Series Themed Experiences are designed with a strong connection to the Disney classic stories. *Recommended 7 yrs & younger.*

**JUMP UP! SERIES** - The Let's Move! Themed Experiences will include large ground games & movement-oriented activities.

**CREATE & INVENT SERIES** - The Create & Invent Themed Experiences will have a tactile focus allowing children to create and admire their work.

**IN THE SPOTLIGHT SERIES** - The In The Spotlight Themed Experiences focus on children's stage presence with lots of activities and enthusiasm. *Recommended 7 yrs & older.*

**SOLVE IT! SERIES** - The Solve It! Themed Experiences are less active, but will challenge children with problem/solutions-based activities. *Recommended 7 yrs & older.*

**YOUTH ACTIVITIES OPEN HOUSE** - Activities for families, adults and children of all ages to enjoy together.

## DINE & PLAY

A convenience for families dining at 8:15 p.m., our Youth Activities Counselors will be available at 9:15 p.m. at the entrance of Royal Palace, Enchanted Garden and Animator's Palate dining rooms to bring registered children to join the fun in the Youth Activity areas.

## YOUTH ACTIVITIES OPEN HOUSE

Open House is an opportunity for all to come and participate in a variety of exciting activities and free time in the Oceaneer Club, Lab, Edge and Vibe throughout the cruise. During these times secured programming will still be offered in the other venue for those looking to check their children into care.

**Deck 13 Midship (7-9743) - 6:00 p.m. - 1:00 a.m.**

## EDGE (11- 14 YEAR OLDS)

Edge is an interactive play space: play video games, watch television and participate in arts and crafts with kids their own age.

## TAKING IT TO THE EDGE

**10:00 p.m. Edge**

Come and meet your counselors and fellow tweens as we get to know each other and what there is for you to do all week long in Edge.



**Entrance on Deck 4 Forward (7- 9417)**  
**6:00 p.m. - 1:00 a.m.**

## THE DOWNLOAD (14-17 YEAR OLDS)

**10:30 p.m. Vibe**

Come up to Vibe and help plan all the fun activities you will be doing this cruise with your new friends!

# BUENA VISTA THEATRE

## Feature Movies this Voyage

### SUNDAY - PORT CANAVERAL

5:30 p.m. PG The Odd Life of Timothy Green  
 8:15 p.m. PG The Odd Life of Timothy Green  
 10:15 p.m. G Finding Nemo **DOLBY.3D**

### MONDAY - NASSAU

12:00 p.m. PG The Odd Life of Timothy Green  
 2:30 p.m. PG-13 The Avengers - 2D Version **OC**  
 5:30 p.m. PG Brave **DOLBY.3D**  
 8:30 p.m. PG Brave **DOLBY.3D**  
 10:30 p.m. PG The Muppets

### TUESDAY - CASTAWAY CAY

8:30 a.m. PG Brave - 2D Version **OC**  
 10:30 a.m. G Finding Nemo **DOLBY.3D**  
 1:00 p.m. PG The Muppets  
 3:15 p.m. PG The Odd Life of Timothy Green  
 5:30 p.m. G Finding Nemo **DOLBY.3D**  
 8:30 p.m. G Finding Nemo **DOLBY.3D**  
 11:00 p.m. PG-13 The Avengers - 2D Version

### WEDNESDAY - DAY AT SEA

8:30 a.m. G Finding Nemo **DOLBY.3D**  
 1:00 p.m. G Finding Nemo **DOLBY.3D**  
 3:00 p.m. PG Brave - 2D Version  
 5:00 p.m. PG-13 The Avengers **DOLBY.3D**  
 8:15 p.m. PG-13 The Avengers **DOLBY.3D**  
 11:00 p.m. PG The Odd Life of Timothy Green **OC**

Subject to change.



Join the Magic Mirror and Dopey in the fairest game show of them all, Mirror, Mirror. There's trivia, singing and even a relay race. Hi Ho, Hi Ho, its off to play we go!

**D Lounge,**  
**Deck 4, Midship**  
**10:15 p.m.**



## ADULT CABARET

Featuring the Physical Comedy Max Winfrey, as he entertains you in this adult cabaret-style show.  
**Evolution (18+), Deck 4, Aft**  
**10:30 p.m.**



# MORE TO ENJOY WHILE ONBOARD

## PLAN YOUR NEXT CRUISE

Book a future cruise today and you'll save 10%, receive up to a \$200 onboard credit, and pay a reduced deposit! Tune to Channel 8 on your stateroom TV for details and visit the Future Cruise Sales Desk, Deck 4, Midship.

## DISNEY VACATION CLUB® MEMBER CELEBRATION

Members! Mix and mingle with other Members and learn how you can enhance your Membership! Please see a *Disney Vacation Club* representative on Deck 4, Midship, or call 7-2805 from your stateroom phone for more information.

## MIDSHIP DETECTIVE AGENCY

Use your detective know-how and our special detective "badge" to search the ship and catch your criminal! Deck 5, Midship Kiosks.

## BEVERAGE SEMINARS AT SEA

Indulge in the world of beverage! Our beverage team is sharing all their secrets about your favorite drinks. Please visit District Lounge between 12:00 p.m. and 3:30 p.m. to secure your spot. Tasting seminars are for Guests 21 and over. Limited availability.

## FOUR-NIGHT WINE PACKAGES:

### THE CLASSIC WINE PACKAGE & THE PREMIUM WINE PACKAGE

These four-night packages entitle you to select fine wines from our specially designed wine list with up to 25% savings over regular prices. Your dining server will provide more details.

## VALUE WATER PACKAGES

Purchase 24 chilled bottles of Evian water and save over regular prices. For delivery, dial Room Service from your stateroom telephone.



From a visit to the world-renowned Atlantis Resort in Nassau to Parasailing high above the turquoise waters around Castaway Cay, there is an adventure for everyone on your Disney Dream cruise. Visit the friendly team at the Port Adventures Desk, Deck 5, Midship, to learn more about these, and many more Port Adventures.

*Port Adventures Desk, Deck 5, Midship*

## SHOPPING

### IMPORTANT NOTICE FOR NASSAU

Due to our late stay in Nassau, our merchandise locations will not be opening tomorrow. Port regulations state that we may not be open while in port, therefore it is important to get all of your shipboard, poolside, and island essentials this evening. We will reopen on Tuesday at 5:30 p.m. after we have left Castaway Cay.

### DISCOVER THE VISTA GALLERY

Vista Gallery is the location to immerse yourself in the world of fine art, exclusive to Disney Cruise Line. Come see stunning collections from Thomas Kinkade, Darren Wilson, and many more Disney artists! Vista Gallery, Deck 4, Midship.

### IT IS TIME

Be on time for all of the events onboard with a new designer watch. Experience the best from Marc Jacobs, Michael Kors, Citizen, Michele, and TAG. Be sure to see our Disney line of watches available for a little extra magic that you can wear home. White Caps, Deck 3, Forward.

### NEW PERSPECTIVE

Style your eyes and accessorize! See a variety of brands to express yourself including Fossil, Juicy Couture, Carrera, Gucci, Maui Jim, and Oakley. Available at White Caps, Deck 3, Forward and Whozits & Whatzits, Deck 11, Midship.

### ROYAL INVITATION

By royal decree, all princesses are cordially invited to attend the Disney Dream Princess Gathering tomorrow. Mickey's Mainsail has everything you will need to arrive in style – gowns and shoes, tiaras and wigs, wands and jewelry, autograph books and pens. Mickey's Mainsail, Deck 3, Forward.

### SHOPPING ONBOARD

Tax and duty free shopping right here onboard. A great range of jewelry, fragrance and liquor all at competitive prices is available in White Caps. Buy onboard and we will package it safely for your journey home.

**Due to port regulations, when the ship is docked, the stores will remain closed.**

## SENSES RAINFOREST DELUXE CRUISE PASS

Enjoy our scented showers, aroma steam, sauna rooms and private jacuzzi overlooking the ocean. Also, read a nice book on the warm loungers! Unlimited entry when you purchase your cruise pass today!

Couples \$144.00 and Singles \$101.00  
Limited number of passes on sale!

*Senses Spa & Salon, Deck 11, Forward  
Ext. 7-1465*

## PROVENANCE GEMS PRESENTS: "GEMSTONE OF THE NEW MILLENNIUM"

Astonishingly beautiful, exotic and rare - zultanite is an extraordinary color-change gemstone.

Like tanzanite, zultanite is so rare that it is only found in one location worldwide, high in Turkey's Anatolian Mountains.

A rising star in fine jewelry and exclusive to Provenance Gems.

*White Caps, Deck 3, Forward*



## Shutters SAY CHEESE!

Professional Portraits, Lobby Atrium, Deck 3, Midship.

Lifestyle - Six Guests maximum

7:15 - 8:30 p.m. & 9:30 - 10:30 p.m.

**Larger Groups - Please contact the Shutters team on Deck 4 for an appointment**

*\*Please note that photos are available for viewing on our interactive photo kiosks approximately five hours after being taken and are only available for purchase during this cruise.*

## IMPORTANT INFORMATION

### Security Notice

All Guests (including children) who wish to disembark the ship are required to present their Key to the World card at the gangway. A photo ID is also required for those Guests who are 18 years of age or older. Guests under the age of 18 are required to have a Parent, Guardian or other responsible adult sign an authorization form at the time it is given out if they wish to go ashore unaccompanied. Authorization forms are available at the gangways and Guest Services.

### Cold and Flu Reminder

Please wash hands frequently and thoroughly, particularly before meals. Contact the Health Center by dialing 7-1923, should anyone in your party become ill.

### Corridor Quiet Hours

As a courtesy to all our Guests, please recognize quiet hallway hours from 10:00 p.m. til 8:00 a.m.

### Inclement Weather

For the safety of all Guests, outdoor events may be changed due to unforeseen weather conditions.

### Environmental Message

With Disney's commitment to the Environment, please refrain from throwing anything over the Ship's side. Thank you!

### No Reserved Seats Policy

As a courtesy to all our Guests, we kindly advise that the saving of seats is not permitted in the Walt Disney Theatre, and the saving of the sun loungers is not permitted on Deck 11, 12 and 13. Items left unattended will be returned to lost and found at Guest Services, Deck 3 Midship.

### Smoking

For the comfort of our guests the following areas are designated as Smoking areas:

- Deck 13, Forward, port side, by "Currents"
- Deck 12, Aft, port side outdoor area that is accessible through the Meridian Lounge
- Deck 4, Aft, port side from 6:00 p.m. to 6:00 a.m. only (all of Deck 4 is no smoking from 6:00 a.m. to 6:00 p.m.)

-Smoking is permitted on stateroom verandahs.

Smoking is prohibited inside all guest staterooms. Guests found smoking in their staterooms will be charged a \$250 stateroom recovery fee.

### Walt Disney Theatre

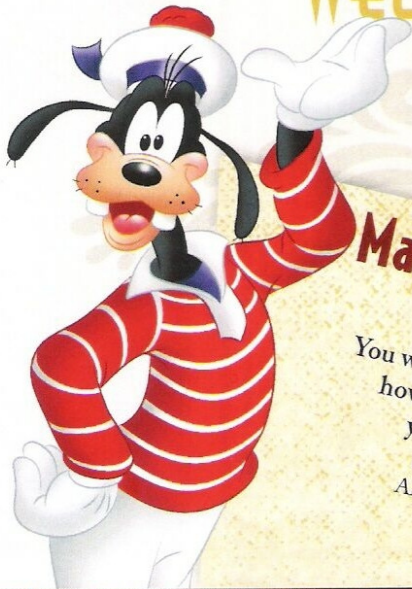
Theatrical performances may use artificial fog, strobe lights, pyrotechnics and other special effects. For the safety of our performers and the comfort of those around you, the use of any photography, video recording devices or any electronic equipment is prohibited.

### Verandah Safety

Please do not leave any combustible materials on your balcony when not present in your stateroom for safety reasons.



# WELCOME ABOARD!



## Mandatory Life Boat Drill

**4:00 PM**  
 (All Guests must attend)  
 You will not need to wear your life jacket, however it is critical that you bring your Key To The World card to your Assembly Station. All ship services will be suspended between 3:45 and 4:30 p.m.

Your Assembly Station is indicated on your Key To The World card.



### SAILING AWAY

It's time to go Sailing Away! Join Mickey and Minnie along with Tinker Bell and the rest of the gang as they welcome you aboard the Disney Dream.

**4:30 p.m.,  
Deck Stage,  
Deck 11, Midship**

Fold along the dotted lines and take me with you so you don't miss any of the fun!

Afternoon	1:45	2:00	2:15	2:30	2:45	3:00	3:15	3:30	3:45	4:00	4:15	4:30	4:45	5:00	5:15	5:30	5:45	6:00	6:15	6:30	6:45
FUNNEL VISION	Virtual Tour Funnel Vision								<b>All ship services will be suspended during this time for the mandatory Boat Drill scheduled for 4:00 p.m.</b> Please refer to the posted drill instructions prior to heading to your Assembly Station.										Toy Story (G) Funnel Vision		
MOVIES																					
CHARACTER													Sailing Away Deck Stage, Deck 11, Midship			Mickey Dk 4, Balcony					
FUN FOR ALL AGES		Ship Tour (Earlier tour also at 1:00 p.m.) Preludes, Deck 3, Forward				Sports Simulator Open House Goofy's Sports Deck							SAILING AWAY DECK STAGE, DECK 11, MIDSHIP		Live Music with The Dreamers Lobby Atrium - Live Music			Red Carpet Arrivals Preludes	<b>THE GOLDEN MICKKEYS</b> A Timeless Tribute Walt Disney Theatre		
ADULTS		Sunday NFL Football 687 Pub (Subject to blackouts & satellite reception)				Disney Vacation Club Member Celebration Evolution															
EDGE	Open House																				
OCEANEER LAB	Open House and Registration																				
OCEANEER CLUB	Open House and Registration																				

Symbol for activities that will be repeated during the cruise



Evening	7:00	7:15	7:30	7:45	8:00	8:15	8:30	8:45	9:00	9:15	9:30	9:45	10:00	10:15	10:30	10:45	11:00	11:15	11:30	11:45	12:00	
FUNNEL VISION					NFL: New York Giants vs. Philadelphia Eagles Funnel Vision (Subject to blackouts & satellite reception)												Remember The Titans (PG) Funnel Vision					
MOVIES					The Odd Life of Timothy Green (PG) Buena Vista Theatre								Finding Nemo (G) <b>DOLBY 3D</b> Buena Vista Theatre									
CHARACTER	Chip & Dale Atrium	Mickey Mouse Deck 4, Balcony			Pluto Atrium							Donald Atrium	Chip & Dale Atrium	Donald Atrium	Goofy Atrium							
FUN FOR ALL AGES			Bingo Pre Sales		Senses Spa BINGO D Lounge		Red Carpet Arrivals Preludes	<b>THE GOLDEN MICKKEYS</b> A Timeless Tribute Walt Disney Theatre				Family Superstar Karaoke D Lounge		Disney's Mirror Mirror D Lounge		Disney DISCO D Lounge						
ADULTS																						
VIBE	Hangin' in Vibe																					
EDGE	Hangin' in Edge																					
OCEANEER LAB	Open for Secured Activities Until 1:00 a.m.																					
OCEANEER CLUB	Open for Secured Activities																					

IN THE SPOTLIGHT SERIES  
 JUMP UP! SERIES  
 CLUBHOUSE SERIES  
 STOREBOOK SERIES  
 OPEN HOUSE

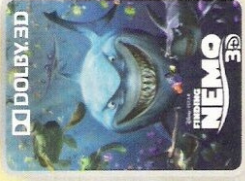


SUNDAY, SEPTEMBER 30, 2012 - PORT CANAVERAL

# BUENA VISTA THEATRE



5:30 p.m. & 8:15 p.m.  
Run Time: 1 hr 40 mins  
Rating: PG



10:15 p.m.  
Run Time: 1 hr 30 mins  
Rating: G

## Character Appearances

**DONALD DUCK**  
Deck 4, Balcony  
12:00 p.m. & 1:00 p.m.  
Lobby Atrium  
9:30 p.m. & 10:00 p.m.

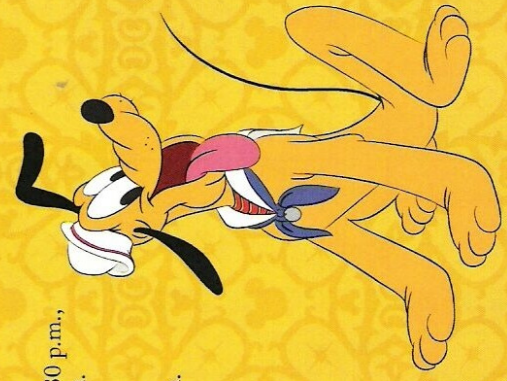
**PLUTO**  
Deck 4, Balcony  
12:30 p.m. & 1:30 p.m.  
Lobby Atrium  
8:00 p.m. & 10:15 p.m.

**MICKEY MOUSE**  
Deck 4, Balcony - 5:30 p.m.,  
7:15 p.m. & 9:45 p.m.

**CHIP & DALE**  
Lobby Atrium  
7:00 p.m. & 9:45 p.m.

**MINNIE MOUSE**  
Lobby Atrium - 7:30 p.m.

**GOOFY**  
Lobby Atrium  
7:30 p.m. & 10:15 p.m.



For details of daily Disney character appearances, refer to the character line on your Navigator Grid, or the digital character board in the Lobby Atrium.

## YOUTH ACTIVITIES THEMED EXPERIENCES

**CLUBHOUSE SERIES**  
focuses on movement and features content which appeals to younger children.

**STORYBOOK SERIES**  
is designed with a strong connection to the Disney classic stories.

**CREATE & INVENT SERIES**  
will have a tactile focus allowing children to create and admire their work.

**OPENHOUSE**  
are activities for families, adults and children of all ages to enjoy together.

**SPOTLIGHT SERIES**  
focuses on children's stage presence with lots of activities and enthusiasm.

**SOLVE IT SERIES**  
are less active, but will challenge children with problem/solutions-based activities.

## SHIP DIRECTORY

### YOUTH ACTIVITIES

DISNEY'S OCEANEER CLUB	Deck 5, Mid	6:45 P.M. - 12:00 MID.
DISNEY'S OCEANEER LAB	Deck 5, Mid	5:30 P.M. - 1:00 A.M.
EDGE	Deck 13, Mid	6:00 P.M. - 1:00 A.M.
VIBE	Deck 4, Fwd	6:00 P.M. - 1:00 A.M.
IT'S A SMALL WORLD NURSERY	Deck 5, Mid	5:30 P.M. - 12:00 MID.

### RECREATION

AQUADUCK	Deck 12, Mid	12:00 P.M. - 3:30 P.M.
DONALD'S POOL	Deck 11, Mid	4:30 P.M. - 12:00 MID.
		11:45 A.M. - 3:30 P.M.
GOLF/SPORTS SIMULATORS	Deck 13, Aft	5:30 P.M. - 11:30 P.M.
		12:00 P.M. - 3:30 P.M.
GOOFY & MAX'S MINI GOLF	Deck 13, Aft	4:30 P.M. - 6:00 P.M.
GOOFY'S SPORTS DECK	Deck 13, Aft	11:00 A.M. - 10:00 P.M.
MICKEY'S POOL	Deck 11, Mid	12:00 A.M. - 6:00 P.M.
MICKEY'S SLIDE	Deck 11, Mid	11:45 A.M. - 12:00 MID.
		12:30 P.M. - 3:30 P.M.
MIDSHIP DETECTIVE AGENCY	Deck 5, Mid	4:30 P.M. - 7:00 P.M.
NEMO'S REEF	Deck 11, Mid	11:00 A.M. - 11:00 P.M.
		12:00 P.M. - 3:30 P.M.
PORT ADVENTURES DESK	Deck 5, Mid	4:30 P.M. - 7:00 P.M.
		12:00 P.M. - 3:30 P.M.
		4:30 P.M. - 6:00 P.M.
QUIET COVE POOL	Deck 11, Fwd	7:00 P.M. - 10:00 P.M.
SENSSES FITNESS CENTER	Deck 11, Fwd	12:00 P.M. - 12:00 MID.
		12:00 P.M. - 10:00 P.M.

### GENERAL INFORMATION

ARR-CADE	Deck 11, Aft	12:00 P.M. - 11:00 P.M.
DISNEY VACATION CLUB	Deck 4, Mid	5:00 P.M. - 10:00 P.M.
FUTURE CRUISE DESK	Deck 4, Mid	7:00 P.M. - 9:30 P.M.
GUEST SERVICES	Deck 3, Mid	24 HOURS
HAIRBRAIDING	Deck 11, Mid	4:30 P.M. - 10:00 P.M.
HEALTH CENTER	Deck 1, Fwd	4:30 P.M. - 7:00 P.M.
PRELUDES	Deck 3, Fwd	5:45 P.M. - 6:30 P.M.
		8:00 P.M. - 8:45 P.M.
SENSSES SPA AND SALON	Deck 11, Fwd	12:00 P.M. - 10:00 P.M.
SHUTTERS PHOTO GALLERY	Deck 4, Mid	7:00 P.M. - 11:00 P.M.

### SHOPPING

MICKEY'S MAINSAIL	Deck 3, Fwd	6:00 P.M. - 11:00 P.M.
SEA TREASURES	Deck 3, Fwd	6:00 P.M. - 11:00 P.M.
VISTA GALLERY	Deck 4, Mid	6:00 P.M. - 11:00 P.M.
WHITE CAPS	Deck 3, Fwd	6:00 P.M. - 11:00 P.M.
WHOZITS & WHATZITS	Deck 11, Mid	6:00 P.M. - 9:00 P.M.

**DINNER**  
Animators' Palace: Pacific Rim Cuisine  
Bochained Garden: Continental Market  
Royal Palace: French Dinner  
Dining Times: 5:45 p.m. & 8:15 p.m.

**DRINK OF THE DAY**  
Paradise Cocktail (Alcoholic)  
Espresso Chai (Non-Alcoholic)

**WEATHER FORECAST**  
Sunday: Partly Sunny  
High: 82°F/28°C  
Monday: Partly Sunny  
High: 82°F/28°C

## Evening Attire: Cruise Casual

## DINING & LOUNGES

### LUNCH

CABANAS FOOD COURT (Port Side)	Deck 11, Aft	11:30 A.M. - 3:15 P.M.
CABANAS FOOD COURT (Starboard)	Deck 11, Aft	12:00 P.M. - 3:00 P.M.
ENCHANTED GARDEN	Deck 2, Mid	12:15 P.M. - 2:00 P.M.
FILMORE'S FAVORITES	Deck 11, Mid	12:00 P.M. - 7:00 P.M.
LUIGI'S PIZZA	Deck 11, Mid	12:00 P.M. - 6:00 P.M.
TOW MATEY'S GRILL	Deck 11, Mid	12:00 P.M. - 6:00 P.M.

### DINNER

ANIMATOR'S PALATE	Deck 3, Aft	5:45 P.M. & 8:15 P.M.
ENCHANTED GARDEN	Deck 2, Mid	5:45 P.M. & 8:15 P.M.
ROYAL PALACE	Deck 3, Mid	5:45 P.M. & 8:15 P.M.
TOW MATEY'S GRILL	Deck 11, Mid	6:00 P.M. - 11:00 P.M.
PALO & REMY (18+)	Deck 12, Aft	6:00 P.M. - 9:00 P.M.

### LATE NIGHT SNACKS

LUIGI'S PIZZA	Deck 11, Aft	9:30 P.M. - 12:00 MID.
THE DISTRICT	Deck 4, Aft	10:45 P.M. - 11:45 P.M.

### ADDED FEATURES

BEVERAGE STATION	Deck 11, Aft	24 HOURS
EYE SCREAM	Deck 11, Mid	12:00 P.M. - 12:00 MID.
ROOM SERVICE	Dial 0	24 HOURS

### ENTERTAINMENT - LOUNGES - BARS

Adults must be 21 and older to consume alcoholic beverages.

687 PUB	Deck 4, Aft	12:00 P.M. - 9:00 P.M.
687 PUB (18+)	Deck 4, Aft	9:00 P.M. - 12:00 MID.
BON VOYAGE	Deck 3, Mid	11:30 A.M. - 11:00 P.M.
COVE BAR (18+)	Deck 11, Fwd	12:00 P.M. - 11:00 P.M.
COVE CAFE (18+)	Deck 11, Fwd	7:00 A.M. - 6:00 P.M.
COVE CAFE WINE BAR (18+)	Deck 11, Fwd	6:00 P.M. - 12:00 MID.
CURRENTS	Deck 13, Fwd	12:00 P.M. - 11:00 P.M.
D LOUNGE	Deck 4, Mid	SHOWTIMES
DISTRICT LOUNGE	Deck 4, Aft	12:00 P.M. - 9:00 P.M.
DISTRICT LOUNGE (18+)	Deck 4, Aft	9:00 P.M. - 12:00 MID.
EVOLUTION (18+)	Deck 4, Aft	10:00 P.M. - 2:00 A.M.
FROZONE TREATS	Deck 11, Mid	11:30 A.M. - 11:00 P.M.
MERIDIAN (18+)	Deck 12, Aft	5:00 P.M. - 12:30 A.M.
OUTLOOK	Deck 14, Mid	SUNSET TIMES
PINK (18+)	Deck 4, Aft	5:00 P.M. - 12:30 A.M.
SKYLINE (18+)	Deck 4, Aft	6:30 P.M. - 12:30 A.M.
VISTA CAFE	Deck 4, Mid	12:00 P.M. - 11:00 P.M.
WAVES	Deck 12, Aft	12:00 P.M. - 7:00 P.M.

Consumers who order raw or partially cooked, ready-to-eat food of animal origin, are hereby informed that the food is not sufficiently cooked to ensure its safety.

**GOOFLY'S SPORTS Digital Simulators**  
Sports Simulator (Basketball, Baseball, Hockey, or Soccer) \$25 / half hr, \$45 / hr  
Golf Simulator \$12 / half hr, \$20 / hr  
Reservations can be made at the Port Adventures Desk, Deck 5, Midship or at the Simulators, Deck 13, Aft